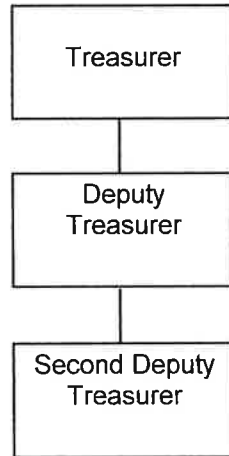


## Treasurer



**CENTRE COUNTY GOVERNMENT  
2016 BUDGET**

<p><b>Function: General Government - Administrative</b></p> <p><b>Fund Type: General Fund</b></p>	<p><b>Department: Treasurer</b></p>
<p><b>Description:</b></p> <p>The County Treasurer's Office receives and disburses County monies as prescribed by the County Controller and the County Commissioners. The relationship with other County offices is to facilitate the receipt and disbursement of County funds, mostly on a daily basis. This office distributes payroll checks to approximately 550 employees on a bi-weekly basis, as well as over 800 general fund expense checks monthly. In addition, the office acts as an agent of the state in the sale of hunting, fishing, dog and pistol licenses. Also, the office sells Bingo Licenses, Small Games of Chance Licenses, and Special Raffle Permits. The Treasurer's Office assists the State in generating over \$150,000 in revenue for Pennsylvania and approximately \$27,000 in commissions for Centre County.</p> <p>The Treasurer serves on the Retirement Board, which administers the County Retirement Fund of over \$100 million. The office acts as the County collector/receiving agent for the Hotel Room Sales Tax. In addition, this office is responsible for acquiring and awarding bids for investing over \$25 million of County money in local banks annually.</p>	<p><b>Highlights/Goals:</b></p> <ul style="list-style-type: none"> <li>• Investment earnings averaging over \$164,000 per year for the last four fiscal years on the short term investment of general fund monies otherwise temporarily idle.</li> <li>• The Treasurer's Office created and implemented a system for electronically tracking dog licenses issued in Centre County. This information is shared with the Emergency Communications Department to be referenced by the various Dog Law Enforcement Officers throughout the county: 24 hours a day; seven days a week.</li> <li>• The computerization of the record keeping for the sale of various licenses and the related reporting to the state agencies.</li> <li>• The ongoing implementation of computers into all phases of the office in order to increase efficiency and productivity.</li> <li>• Implementation of a Web Based Point of Sale automated licensing system for the sale of fishing licenses and hunting licenses to the public.</li> </ul>

**CENTRE COUNTY GOVERNMENT  
2016 PROGRAM SUMMARY**

	<u>STATUTORY AUTHORITY</u>	<u>COMMISSIONERS INITIATIVE</u>	<u>MANDATED PROGRAMS</u>
<b>Treasurer</b>			
<b><u>PROGRAMS</u></b>			
Collector/Receiving Agent for the Hotel Occupancy Tax	Act 18 of 1997	X	
Sale of Bingo Licenses	Bingo Law Act of 1981		X
Sale of Dog Licenses	Dog Law Act of 1965		X
Sale of Fishing Licenses	Act 180 of 1949		X
Sale of Hunting Licenses	Game & Wildlife Code 34		X
Sale of Pistol Permits	Act 158 of 1988		X
Sale of Small Games of Chance Licenses	The Pennsylvania Local Option Small Games of Chance Act of 1988		X

TREASURER

ACCT#	Account Title	2012 Actual	2013 Actual	2014 Actual	2015 Projected	2016 Budget
43151	FEES-SMALL GAMES LICENSE	\$14,970	\$17,105	\$20,575	\$20,600	\$20,000
43152	FEES-BINGO LICENSE	\$3,330	\$3,260	\$3,260	\$3,000	\$3,000
43301	COMMISSIONS	\$60,581	\$59,729	\$79,338	\$60,360	\$60,800
43901	FINES & FORFEITURES	\$200	\$125	\$125	\$100	\$125
44101	INTEREST INCOME	\$394	\$302	\$231	\$191	\$120
44601	MISC DEPTMENTAL RECEIPTS	\$0	\$0	\$0	\$78	\$0
58690	INT CREDIT INDIRECT COST	\$62,248	\$58,263	\$39,444	\$42,368	\$53,446
<b>Total</b>		<b>\$141,723</b>	<b>\$138,833</b>	<b>\$142,972</b>	<b>\$126,697</b>	<b>\$137,491</b>
65110	SALARIES AND WAGES-REG	\$121,521	\$123,746	\$141,658	\$135,392	\$142,913
65211	BENEFITS-FICA	\$8,616	\$8,896	\$10,357	\$9,881	\$10,933
65212	BENEFITS-RETIRMNT CONTRIB	\$13,280	\$13,405	\$12,617	\$9,910	\$12,991
65213	BENEFITS-GROUP INSURANCE	\$46,833	\$40,818	\$35,053	\$34,546	\$34,816
65214	BENEFITS-U/C INSURANCE	\$247	\$268	\$441	\$274	\$611
65215	BENEFITS-W/C INSURANCE	\$2,458	\$2,531	\$1,530	\$1,707	\$1,971
65410	PROFESSIONAL DUES	\$645	\$750	\$695	\$695	\$795
65430	COURSES AND SEMINARS	\$300	\$200	\$200	\$200	\$300
66220	TELEPHONE	\$462	\$405	\$359	\$380	\$400
66230	POSTAGE	\$7,272	\$7,656	\$7,941	\$8,500	\$8,600
66240	PRINTING	\$895	\$852	\$973	\$1,000	\$1,000
66250	PHOTOCOPY	\$330	\$290	\$193	\$200	\$200
66310	SUPPLIES-GENERAL OFFICE	\$977	\$845	\$710	\$900	\$900
66410	STAFF TRAVEL	\$1,468	\$1,749	\$1,564	\$1,700	\$0
66411	STAFF MILEAGE REIMBURSMNT	\$0	\$0	\$0	\$0	\$1,400
66412	STAFF ALLOWBLE MEAL REIMB	\$0	\$0	\$0	\$0	\$25
66413	STAFF LODGING REIMBURSMNT	\$0	\$0	\$0	\$0	\$950
66415	STAFF TRAVEL-OTHER REIMB	\$0	\$0	\$0	\$0	\$30
66630	INSURANCE & BOND PREMIUM	\$817	\$669	\$549	\$824	\$849
66640	MISC OPERATING EXPENSE	\$135	\$145	\$113	\$150	\$200
68110	EQUIPMENT	\$0	\$212	\$178	\$0	\$0
88604	INT CHARGE DP USAGE	\$7,200	\$7,200	\$7,200	\$7,200	\$7,200
88681	INT CHARGE IT INFRASTRCTR	\$2,520	\$2,520	\$2,520	\$2,100	\$2,100
<b>Total</b>		<b>\$215,977</b>	<b>\$213,157</b>	<b>\$224,851</b>	<b>\$215,559</b>	<b>\$229,183</b>
<b>Net Use General Fund</b>		<b>\$74,254</b>	<b>\$74,324</b>	<b>\$81,879</b>	<b>\$88,862</b>	<b>\$91,692</b>

<b>Dept Number</b>	<b><u>Department Name</u></b>		<b>2016</b>
<b>124</b>	<b>Treasurer</b>		<b><u>Budget</u></b>
<b><u>Acct.No</u></b>	<b><u>Account Name</u></b>	<b><u>Description</u></b>	
43151	Fees-Small Games License	Small Games of Chance and Special Raffle Permits	20,000
		<b>TOTAL</b>	<b>20,000</b>
43152	Fees- Bingo License	Bingo Licenses	3,000
		<b>TOTAL</b>	<b>3,000</b>
43301	Commissions	Administration of Hotel Room Tax @2.0%	36,000
		Hunting Licenses	10,500
		Dog Licenses	14,000
		Fishing Licenses	150
		Pistol Permits	150
		<b>TOTAL</b>	<b>60,800</b>
43901	Fines & Forfeitures	Bad Check Fees and Parking Tickets	125
		<b>TOTAL</b>	<b>125</b>
44101	Interest Income	Interest Earned on Escheats Account	120
		<b>TOTAL</b>	<b>120</b>
65410	Professional Dues	PA-GFOA	75
		PAPERS(PA Assoc of Public Emp Retirement Sys)	95
		PA County Treasurers Association	625
		<b>TOTAL</b>	<b>795</b>
65430	Courses and Seminars	PA County Treasurers Association Conference	300
		<b>TOTAL</b>	<b>300</b>
66220	Phone	Telephone and Fax	400
		<b>TOTAL</b>	<b>400</b>
66230	Postage	Postage Services	8,600
		<b>TOTAL</b>	<b>8,600</b>

<b>Dept Number</b> <b>124</b>	<b>Department Name</b> <b>Treasurer</b>		<b>2016</b> <b>Budget</b>
<u>Acct.No</u> <b>66240</b>	<u>Account Name</u> <b>Printing</b>	<u>Description</u> Printing Services	1,000 <b>TOTAL 1,000</b>
<b>66250</b>	<b>Copies</b>	Copies	200 <b>TOTAL 200</b>
<b>66310</b>	<b>Supplies</b>	General Office Supplies	900 <b>TOTAL 900</b>
<b>66411</b>	<b>Staff Mileage Reimbursement</b>	Emerald Investment Seminar PA County Treasurers Assoc. Conference Local Mileage	200 200 1000 <b>TOTAL 1,400</b>
<b>66412</b>	<b>Staff Allowable Meal Reimb</b>	Conferences	25 <b>TOTAL 25</b>
<b>66413</b>	<b>Staff Lodging Reimb</b>	Emerald Investment Seminar PA County Treasurers Assoc. Conference	350 600 <b>TOTAL 950</b>
<b>66415</b>	<b>Staff Other Travel Reimb</b>	Parking, Tolls, etc.	30 <b>TOTAL 30</b>
<b>66630</b>	<b>Ins/Bond Prem</b>	Insurance Costs - County	849 <b>TOTAL 849</b>
<b>66640</b>	<b>Miscellaneous</b>	RSVP Appreciation Luncheon Sundry Expenses	150 50 <b>TOTAL 200</b>

This Page Intentionally Left Blank

