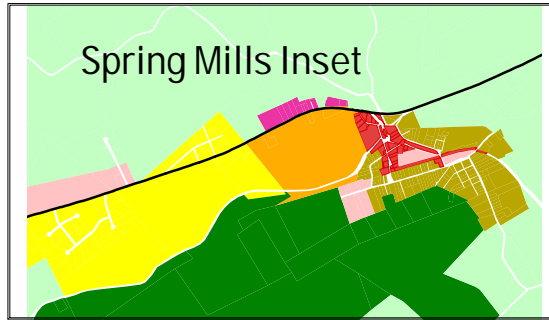
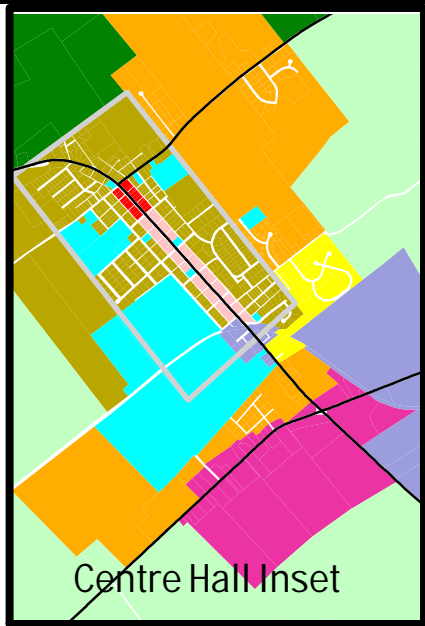
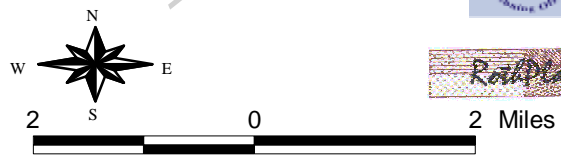
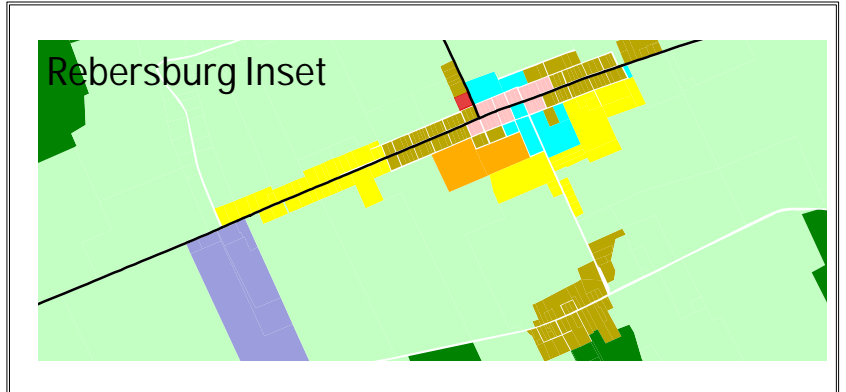
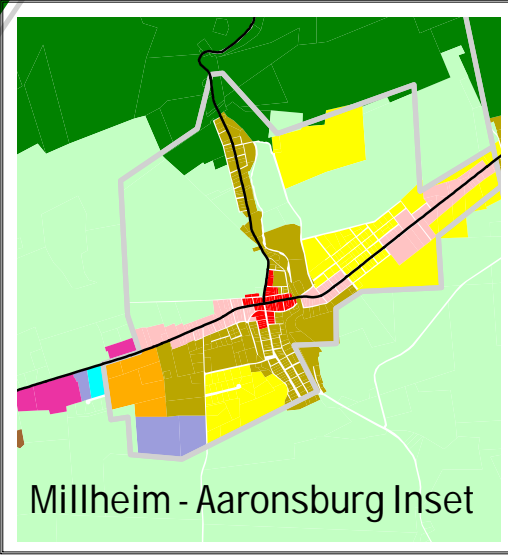
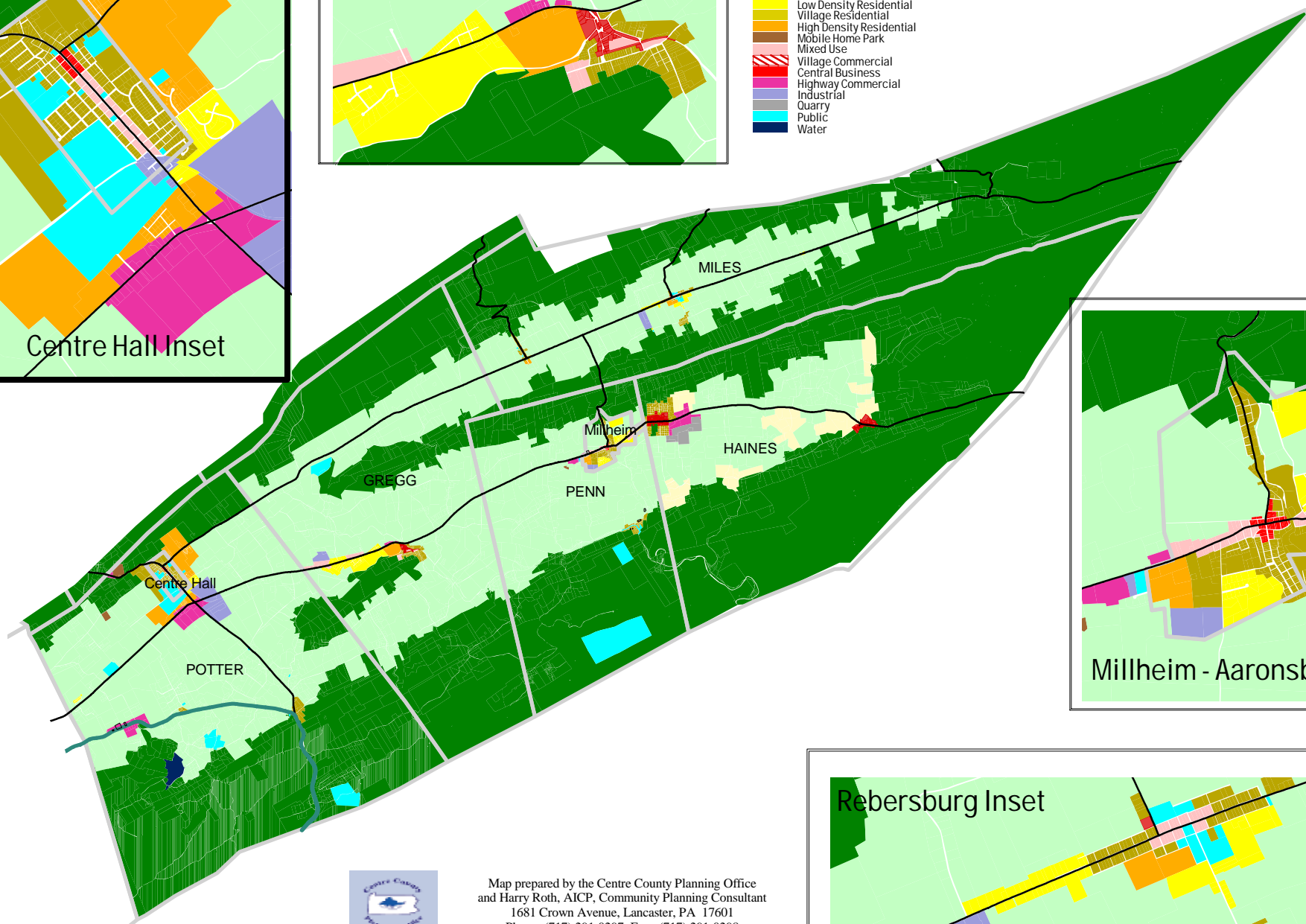


Penns Valley Region Future Land Use Map



- FUTURE LAND USE**
- Conservation
 - Agriculture
 - Rural Residential
 - Low Density Residential
 - Village Residential
 - High Density Residential
 - Mobile Home Park
 - Mixed Use
 - Village Commercial
 - Central Business
 - Highway Commercial
 - Industrial
 - Quarry
 - Public
 - Water



Map prepared by the Centre County Planning Office
 and Harry Roth, AICP, Community Planning Consultant
 1681 Crown Avenue, Lancaster, PA 17601
 Phone: (717) 291-0297 Fax: (717) 291-0298
 E-mail: rothplan@dejazzd.com



Map prepared by the Centre County Planning Office
 Sources: Centre County GIS, 2005.
 All boundaries are approximations and should
 not be used for legal purposes.
 Map created: September 2005.