

OFFICIAL MUNICIPAL ELECTION BALLOT
 Commonwealth of Pennsylvania - Centre County
 November 2, 2021

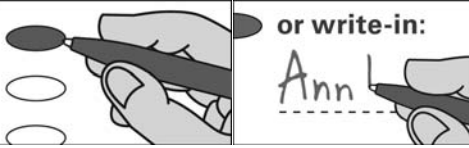
2 - BELLEFONTE NORTHEAST

INSTRUCTIONS TO VOTER

Use a **BLACK** pen.

COMPLETELY blacken the oval to the left of your choice.

If you make a mistake **DO NOT ERASE OR CROSS OUT**. Ask for a new ballot.



To cast a **WRITE-IN** for a person whose name is not on the ballot, blacken the oval to the left of **WRITE-IN** and clearly print the name in the space provided.

JUSTICE OF THE SUPREME COURT
Vote for One

- MARIA MCLAUGHLIN
DEMOCRATIC
- KEVIN BROBSON
REPUBLICAN

Write-in

JUDGE OF THE SUPERIOR COURT
Vote for One

- TIMIKA LANE
DEMOCRATIC
- MEGAN SULLIVAN
REPUBLICAN

Write-in

JUDGE OF THE COMMONWEALTH COURT
Vote for no more than Two

- LORI A DUMAS
DEMOCRATIC
- DAVID LEE SPURGEON
DEMOCRATIC
- STACY MARIE WALLACE
REPUBLICAN
- DREW CROMPTON
REPUBLICAN

Write-in

Write-in

DISTRICT ATTORNEY
Vote for One

- BERNIE CANTORNA
DEMOCRATIC/REPUBLICAN

Write-in

JURY COMMISSIONER
Vote for One

- SHELLEY THOMPSON
DEMOCRATIC
- HOPE P MILLER
REPUBLICAN

Write-in

MAYOR
Vote for One

- GENE D JOHNSON JR
DEMOCRATIC/REPUBLICAN

Write-in

COUNCILMAN - WARD 1
Vote for no more than Two

- MELISSA HOMBOSKY
DEMOCRATIC
- JON EATON
DEMOCRATIC
- KENT D BERNIER
REPUBLICAN
- RITA PURNELL
REPUBLICAN

Write-in

Write-in

TAX COLLECTOR
Vote for One

- DEBRA A BURGER
DEMOCRATIC/REPUBLICAN

Write-in

CONSTABLE
Vote for One

Write-in

SCHOOL DIRECTOR
BELLEFONTE SCHOOL DISTRICT
Vote for no more than Four

- ANDREA ROYER
DEMOCRATIC/REPUBLICAN

- JEFFREY SCOTT STEINER
DEMOCRATIC/REPUBLICAN

- RODNEY E MUSSER
DEMOCRATIC

- JORDAN EMELY
DEMOCRATIC

- JACK BECHDEL II
REPUBLICAN

- JON GUIZAR
REPUBLICAN

Write-in

Write-in

- Write-in

Write-in

JUDGE OF ELECTIONS
Vote for One

Write-in

INSPECTOR OF ELECTIONS
Vote for One

Write-in

TURN BALLOT OVER



2 - BELLEFONTE NORTHEAST

OFFICIAL RETENTION BALLOT
Commonwealth of Pennsylvania - Centre County
November 2, 2021

2 - BELLEFONTE NORTHEAST

INSTRUCTIONS TO VOTER

Use a **BLACK** pen.

COMPLETELY blacken the oval to the left of your choice.



An oval blackened to the left of the word **YES** is a vote **IN FAVOR** of the question.

An oval blackened to the left of the word **NO** is a vote **AGAINST** the question.

If you make a mistake. **DO NOT ERASE OR CROSS OUT.** Ask for a new ballot.

**SUPERIOR COURT
RETENTION ELECTION
QUESTIONS**

Shall John T Bender be retained for an additional term as Judge of the Superior Court of the Commonwealth of Pennsylvania?

- Yes
- No

Shall Mary Jane Bowes be retained for an additional term as Judge of the Superior Court of the Commonwealth of Pennsylvania?

- Yes
- No

**COMMONWEALTH COURT
RETENTION ELECTION
QUESTIONS**

Shall Anne E Covey be retained for an additional term as Judge of the Commonwealth Court of the Commonwealth of Pennsylvania?

- Yes
- No

Shall Renee Cohn Jubelirer be retained for an additional term as Judge of the Commonwealth Court of the Commonwealth of Pennsylvania?

- Yes
- No

**COURT OF COMMON PLEAS
RETENTION ELECTION
QUESTION**

Shall Jonathan D Grine be retained for an additional term as Judge of the Court of Common Pleas, 49th Judicial District, Centre County?

- Yes
- No

END OF BALLOT

Steven Dershem
Michael Pipe
Mark Higgins

CENTRE COUNTY BOARD OF ELECTIONS

2 - BELLEFONTE NORTHEAST