

**OFFICIAL MUNICIPAL ELECTION BALLOT**  
 Commonwealth of Pennsylvania - Centre County  
 November 2, 2021

8 - MILESBURG BOROUGH

**DISTRICT ATTORNEY**  
Vote for One

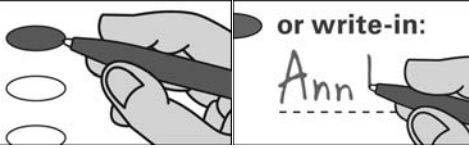
**JUDGE OF ELECTIONS**  
Vote for One

**INSTRUCTIONS TO VOTER**

Use a **BLACK** pen.

**COMPLETELY** blacken the oval to the left of your choice.

If you make a mistake **DO NOT ERASE OR CROSS OUT**. Ask for a new ballot.



To cast a **WRITE-IN** for a person whose name is not on the ballot, blacken the oval to the left of **WRITE-IN** and clearly print the name in the space provided.

BERNIE CANTORNA  
DEMOCRATIC/REPUBLICAN

Write-in

Write-in

**JURY COMMISSIONER**  
Vote for One

**INSPECTOR OF ELECTIONS**  
Vote for One

SHELLEY THOMPSON  
DEMOCRATIC  
 HOPE P MILLER  
REPUBLICAN

Write-in

**MAYOR**  
Vote for One

**JUSTICE OF THE SUPREME COURT**  
Vote for One

Write-in

MARIA MCLAUGHLIN  
DEMOCRATIC

**COUNCILMAN**  
Vote for no more than Three

KEVIN BROBSON  
REPUBLICAN

SANDRA DIETERLE  
DEMOCRATIC/REPUBLICAN  
 FREDERICK T KELLERMAN  
REPUBLICAN  
 PLUMMER W DAVIDSON  
REPUBLICAN

Write-in

**JUDGE OF THE SUPERIOR COURT**  
Vote for One

TIMIKA LANE  
DEMOCRATIC

Write-in

MEGAN SULLIVAN  
REPUBLICAN

Write-in

Write-in

**JUDGE OF THE COMMONWEALTH COURT**  
Vote for no more than Two

Write-in

LORI A DUMAS  
DEMOCRATIC

**TAX COLLECTOR**  
Vote for One

DAVID LEE SPURGEON  
DEMOCRATIC

STACY MARIE WALLACE  
REPUBLICAN

Write-in

DREW CROMPTON  
REPUBLICAN

**CONSTABLE**  
Vote for One

Write-in

Write-in

Write-in

**SCHOOL DIRECTOR**  
BALD EAGLE SCHOOL DISTRICT  
REGION 3  
Vote for One

TINA LC GREENE  
DEMOCRATIC/REPUBLICAN

Write-in

**TURN BALLOT OVER**



8 - MILESBURG BOROUGH

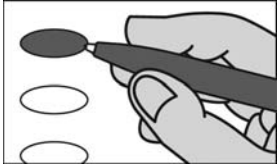
**OFFICIAL RETENTION BALLOT**  
Commonwealth of Pennsylvania - Centre County  
November 2, 2021

8 - MILESBURG BOROUGH

**INSTRUCTIONS TO VOTER**

Use a **BLACK** pen.

**COMPLETELY** blacken the oval to the left of your choice.



An oval blackened to the left of the word **YES** is a vote **IN FAVOR** of the question.

An oval blackened to the left of the word **NO** is a vote **AGAINST** the question.

If you make a mistake. **DO NOT ERASE OR CROSS OUT.** Ask for a new ballot.

**SUPERIOR COURT  
RETENTION ELECTION  
QUESTIONS**

Shall John T Bender be retained for an additional term as Judge of the Superior Court of the Commonwealth of Pennsylvania?

- Yes
- No

Shall Mary Jane Bowes be retained for an additional term as Judge of the Superior Court of the Commonwealth of Pennsylvania?

- Yes
- No

**COMMONWEALTH COURT  
RETENTION ELECTION  
QUESTIONS**

Shall Anne E Covey be retained for an additional term as Judge of the Commonwealth Court of the Commonwealth of Pennsylvania?

- Yes
- No

Shall Renee Cohn Jubelirer be retained for an additional term as Judge of the Commonwealth Court of the Commonwealth of Pennsylvania?

- Yes
- No

**COURT OF COMMON PLEAS  
RETENTION ELECTION  
QUESTION**

Shall Jonathan D Grine be retained for an additional term as Judge of the Court of Common Pleas, 49th Judicial District, Centre County?

- Yes
- No

**END OF BALLOT**

*Steven Dershem*  
*Michael Pipe*  
*Mark Higgins*

CENTRE COUNTY BOARD OF ELECTIONS

8 - MILESBURG BOROUGH