

OFFICIAL MUNICIPAL ELECTION BALLOT
 Commonwealth of Pennsylvania - Centre County
 November 2, 2021

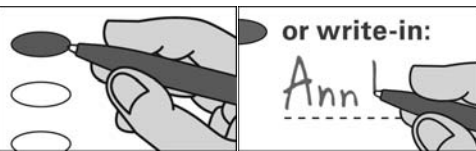
9 - MILLHEIM BOROUGH

INSTRUCTIONS TO VOTER

Use a **BLACK** pen.

COMPLETELY blacken the oval to the left of your choice.

If you make a mistake **DO NOT ERASE OR CROSS OUT**. Ask for a new ballot.



To cast a **WRITE-IN** for a person whose name is not on the ballot, blacken the oval to the left of **WRITE-IN** and clearly print the name in the space provided.

JUSTICE OF THE SUPREME COURT
Vote for One

- MARIA MCLAUGHLIN
DEMOCRATIC
- KEVIN BROBSON
REPUBLICAN

Write-in

JUDGE OF THE SUPERIOR COURT
Vote for One

- TIMIKA LANE
DEMOCRATIC
- MEGAN SULLIVAN
REPUBLICAN

Write-in

JUDGE OF THE COMMONWEALTH COURT
Vote for no more than Two

- LORI A DUMAS
DEMOCRATIC
- DAVID LEE SPURGEON
DEMOCRATIC
- STACY MARIE WALLACE
REPUBLICAN
- DREW CROMPTON
REPUBLICAN

Write-in

Write-in

Write-in

DISTRICT ATTORNEY
Vote for One

- BERNIE CANTORNA
DEMOCRATIC/REPUBLICAN

Write-in

JURY COMMISSIONER
Vote for One

- SHELLEY THOMPSON
DEMOCRATIC
- HOPE P MILLER
REPUBLICAN

Write-in

**MAGISTERIAL DISTRICT JUDGE
DISTRICT 49-3-04**
Vote for One

- GREGORY KOEHLE
DEMOCRATIC/REPUBLICAN

Write-in

MAYOR
Vote for One

- STEPHEN MYERS
DEMOCRATIC

Write-in

COUNCILMAN
Vote for no more than Two

- CECILIA GALLUP
DEMOCRATIC
- NICKELAUS ENGLE
DEMOCRATIC

Write-in

Write-in

TAX COLLECTOR
Vote for One

- KATHY S HIGHBAUGH
DEMOCRATIC

Write-in

CONSTABLE
Vote for One

- MELANIE MORRISON
DEMOCRATIC

Write-in

SCHOOL DIRECTOR AT LARGE
PENNS VALLEY SCHOOL DISTRICT
Vote for no more than Two

- ALLEN M MILLER
DEMOCRATIC/REPUBLICAN
- LISA BIERLEIN
DEMOCRATIC/REPUBLICAN

Write-in

Write-in

**SCHOOL DIRECTOR
REGION 3**
PENNS VALLEY SCHOOL DISTRICT
Vote for One

- MARCIA KIMLER
DEMOCRATIC/REPUBLICAN

Write-in

JUDGE OF ELECTIONS
Vote for One

- J ALAN ILGEN
REPUBLICAN

Write-in

INSPECTOR OF ELECTIONS
Vote for One

Write-in

TURN BALLOT OVER



9 - MILLHEIM BOROUGH

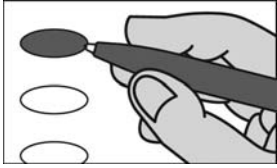
OFFICIAL RETENTION BALLOT
Commonwealth of Pennsylvania - Centre County
November 2, 2021

9 - MILLHEIM BOROUGH

INSTRUCTIONS TO VOTER

Use a **BLACK** pen.

COMPLETELY blacken the oval to the left of your choice.



An oval blackened to the left of the word **YES** is a vote **IN FAVOR** of the question.

An oval blackened to the left of the word **NO** is a vote **AGAINST** the question.

If you make a mistake. **DO NOT ERASE OR CROSS OUT.** Ask for a new ballot.

**SUPERIOR COURT
RETENTION ELECTION
QUESTIONS**

Shall John T Bender be retained for an additional term as Judge of the Superior Court of the Commonwealth of Pennsylvania?

- Yes
- No

Shall Mary Jane Bowes be retained for an additional term as Judge of the Superior Court of the Commonwealth of Pennsylvania?

- Yes
- No

**COMMONWEALTH COURT
RETENTION ELECTION
QUESTIONS**

Shall Anne E Covey be retained for an additional term as Judge of the Commonwealth Court of the Commonwealth of Pennsylvania?

- Yes
- No

Shall Renee Cohn Jubelirer be retained for an additional term as Judge of the Commonwealth Court of the Commonwealth of Pennsylvania?

- Yes
- No

**COURT OF COMMON PLEAS
RETENTION ELECTION
QUESTION**

Shall Jonathan D Grine be retained for an additional term as Judge of the Court of Common Pleas, 49th Judicial District, Centre County?

- Yes
- No

END OF BALLOT

Steven Dershem
Michael Pipe
Mark Higgins

CENTRE COUNTY BOARD OF ELECTIONS

9 - MILLHEIM BOROUGH