

**OFFICIAL MUNICIPAL ELECTION BALLOT**  
 Commonwealth of Pennsylvania - Centre County  
 November 2, 2021

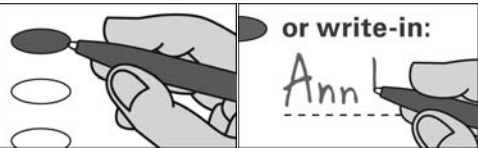
30 - STATE COLLEGE EAST CENTRAL  
 3

**INSTRUCTIONS TO VOTER**

Use a **BLACK** pen.

**COMPLETELY** blacken the oval to the left of your choice.

If you make a mistake **DO NOT ERASE OR CROSS OUT**. Ask for a new ballot.



To cast a **WRITE-IN** for a person whose name is not on the ballot, blacken the oval to the left of **WRITE-IN** and clearly print the name in the space provided.

**JUSTICE OF THE SUPREME COURT**  
 Vote for One

MARIA MCLAUGHLIN  
 DEMOCRATIC

KEVIN BROBSON  
 REPUBLICAN

Write-in

**JUDGE OF THE SUPERIOR COURT**  
 Vote for One

TIMIKA LANE  
 DEMOCRATIC

MEGAN SULLIVAN  
 REPUBLICAN

Write-in

**JUDGE OF THE COMMONWEALTH COURT**  
 Vote for no more than Two

LORI A DUMAS  
 DEMOCRATIC

DAVID LEE SPURGEON  
 DEMOCRATIC

STACY MARIE WALLACE  
 REPUBLICAN

DREW CROMPTON  
 REPUBLICAN

Write-in

Write-in

**DISTRICT ATTORNEY**  
 Vote for One

BERNIE CANTORNA  
 DEMOCRATIC/REPUBLICAN

Write-in

**JURY COMMISSIONER**  
 Vote for One

SHELLEY THOMPSON  
 DEMOCRATIC

HOPE P MILLER  
 REPUBLICAN

Write-in

**MAYOR**  
 Vote for One

EZRA NANES  
 DEMOCRATIC

Write-in

**COUNCILMAN**  
 Vote for no more than Three

GOPAL BALACHANDRAN  
 DEMOCRATIC

B DIVINE LIPSCOMB  
 DEMOCRATIC

RICHARD BIEVER  
 DEMOCRATIC

JACOB R WERNER  
 REPUBLICAN

Write-in

Write-in

Write-in

**CONSTABLE**  
 Vote for One

DONALD J DJ WATKINS  
 REPUBLICAN

Write-in

**SCHOOL DIRECTOR**  
 STATE COLLEGE SCHOOL DISTRICT  
 Vote for no more than Four

PETER BUCK  
 DEMOCRATIC/REPUBLICAN

CARLINE CREVECOEUR  
 DEMOCRATIC

DEBORAH ANDERSON  
 DEMOCRATIC/REPUBLICAN

JACKIE HUFF  
 DEMOCRATIC

MICHELLE GLENN YOUNG  
 REPUBLICAN

DAVID K HUTCHINSON  
 REPUBLICAN

Write-in

Write-in

Write-in

Write-in

**JUDGE OF ELECTIONS**  
 Vote for One

Write-in

**INSPECTOR OF ELECTIONS**  
 Vote for One

ANN VAN KUREN  
 DEMOCRATIC

Write-in

**TURN BALLOT OVER**



30 - STATE COLLEGE EAST CENTRAL  
 3

**OFFICIAL RETENTION BALLOT**  
 Commonwealth of Pennsylvania - Centre County  
 November 2, 2021

30 - STATE COLLEGE EAST CENTRAL  
 3

**INSTRUCTIONS TO VOTER**

Use a **BLACK** pen.

**COMPLETELY** blacken the oval to the left of your choice.



An oval blackened to the left of the word **YES** is a vote **IN FAVOR** of the question.

An oval blackened to the left of the word **NO** is a vote **AGAINST** the question.

If you make a mistake. **DO NOT ERASE OR CROSS OUT.** Ask for a new ballot.

**SUPERIOR COURT  
 RETENTION ELECTION  
 QUESTIONS**

Shall John T Bender be retained for an additional term as Judge of the Superior Court of the Commonwealth of Pennsylvania?

- Yes
- No

Shall Mary Jane Bowes be retained for an additional term as Judge of the Superior Court of the Commonwealth of Pennsylvania?

- Yes
- No

**COMMONWEALTH COURT  
 RETENTION ELECTION  
 QUESTIONS**

Shall Anne E Covey be retained for an additional term as Judge of the Commonwealth Court of the Commonwealth of Pennsylvania?

- Yes
- No

Shall Renee Cohn Jubelirer be retained for an additional term as Judge of the Commonwealth Court of the Commonwealth of Pennsylvania?

- Yes
- No

**COURT OF COMMON PLEAS  
 RETENTION ELECTION  
 QUESTION**

Shall Jonathan D Grine be retained for an additional term as Judge of the Court of Common Pleas, 49th Judicial District, Centre County?

- Yes
- No

**END OF BALLOT**

*Steven Dershem*  
 \_\_\_\_\_  
*Michael Pipe*  
 \_\_\_\_\_  
*Mark Higgins*  
 \_\_\_\_\_

CENTRE COUNTY BOARD OF ELECTIONS