

OFFICIAL MUNICIPAL ELECTION BALLOT
 Commonwealth of Pennsylvania - Centre County
 November 2, 2021

51 - FERGUSON EAST

DISTRICT ATTORNEY
Vote for One

SCHOOL DIRECTOR
STATE COLLEGE SCHOOL DISTRICT
Vote for no more than Four

INSTRUCTIONS TO VOTER

Use a **BLACK** pen.

COMPLETELY blacken the oval to the left of your choice.

If you make a mistake **DO NOT ERASE OR CROSS OUT**. Ask for a new ballot.



To cast a **WRITE-IN** for a person whose name is not on the ballot, blacken the oval to the left of **WRITE-IN** and clearly print the name in the space provided.

BERNIE CANTORNA
DEMOCRATIC/REPUBLICAN

Write-in

PETER BUCK
DEMOCRATIC/REPUBLICAN

CARLINE CREVECOEUR
DEMOCRATIC

DEBORAH ANDERSON
DEMOCRATIC/REPUBLICAN

JURY COMMISSIONER
Vote for One

JACKIE HUFF
DEMOCRATIC

MICHELLE GLENN YOUNG
REPUBLICAN

SHELLEY THOMPSON
DEMOCRATIC

HOPE P MILLER
REPUBLICAN

DAVID K HUTCHINSON
REPUBLICAN

Write-in

Write-in

SUPERVISOR AT LARGE
Vote for no more than Two

Write-in

JUSTICE OF THE SUPREME COURT
Vote for One

LISA STRICKLAND
DEMOCRATIC

TIERRA D WILLIAMS
DEMOCRATIC

Write-in

MARIA MCLAUGHLIN
DEMOCRATIC

KEVIN BROBSON
REPUBLICAN

PATTI HIGGINS
REPUBLICAN

JEREMIE THOMPSON
REPUBLICAN

Write-in

JUDGE OF ELECTIONS
Vote for One

Write-in

Write-in

JUDGE OF THE SUPERIOR COURT
Vote for One

Write-in

TIMIKA LANE
DEMOCRATIC

MEGAN SULLIVAN
REPUBLICAN

Write-in

CONSTABLE
Vote for One

INSPECTOR OF ELECTIONS
Vote for One

WILLIAM J BISHOP JR
REPUBLICAN

COUNCIL NEDD
DEMOCRATIC/REPUBLICAN

Write-in

JUDGE OF THE COMMONWEALTH COURT
Vote for no more than Two

Write-in

LORI A DUMAS
DEMOCRATIC

DAVID LEE SPURGEON
DEMOCRATIC

STACY MARIE WALLACE
REPUBLICAN

DREW CROMPTON
REPUBLICAN

Write-in

Write-in

TURN BALLOT OVER



51 - FERGUSON EAST

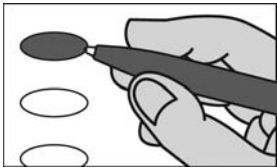
OFFICIAL RETENTION BALLOT
 Commonwealth of Pennsylvania - Centre County
 November 2, 2021

51 - FERGUSON EAST

INSTRUCTIONS TO VOTER

Use a **BLACK** pen.

COMPLETELY blacken the oval to the left of your choice.



An oval blackened to the left of the word **YES** is a vote **IN FAVOR** of the question.

An oval blackened to the left of the word **NO** is a vote **AGAINST** the question.

If you make a mistake. **DO NOT ERASE OR CROSS OUT.** Ask for a new ballot.

**SUPERIOR COURT
 RETENTION ELECTION
 QUESTIONS**

Shall John T Bender be retained for an additional term as Judge of the Superior Court of the Commonwealth of Pennsylvania?

- Yes
- No

Shall Mary Jane Bowes be retained for an additional term as Judge of the Superior Court of the Commonwealth of Pennsylvania?

- Yes
- No

**COMMONWEALTH COURT
 RETENTION ELECTION
 QUESTIONS**

Shall Anne E Covey be retained for an additional term as Judge of the Commonwealth Court of the Commonwealth of Pennsylvania?

- Yes
- No

Shall Renee Cohn Jubelirer be retained for an additional term as Judge of the Commonwealth Court of the Commonwealth of Pennsylvania?

- Yes
- No

**COURT OF COMMON PLEAS
 RETENTION ELECTION
 QUESTION**

Shall Jonathan D Grine be retained for an additional term as Judge of the Court of Common Pleas, 49th Judicial District, Centre County?

- Yes
- No

END OF BALLOT

Steven Dershem

Michael Pipe

Mark Higgins

CENTRE COUNTY BOARD OF ELECTIONS

51 - FERGUSON EAST