

OFFICIAL MUNICIPAL ELECTION BALLOT
 Commonwealth of Pennsylvania - Centre County
 November 2, 2021

52 - FERGUSON WEST

DISTRICT ATTORNEY
Vote for One

SCHOOL DIRECTOR
STATE COLLEGE SCHOOL DISTRICT
Vote for no more than Four

INSTRUCTIONS TO VOTER

Use a **BLACK** pen.

COMPLETELY blacken the oval to the left of your choice.

If you make a mistake **DO NOT ERASE OR CROSS OUT**. Ask for a new ballot.



To cast a **WRITE-IN** for a person whose name is not on the ballot, blacken the oval to the left of **WRITE-IN** and clearly print the name in the space provided.

BERNIE CANTORNA
DEMOCRATIC/REPUBLICAN

Write-in

JURY COMMISSIONER
Vote for One

SHELLEY THOMPSON
DEMOCRATIC
 HOPE P MILLER
REPUBLICAN

Write-in

SUPERVISOR AT LARGE
Vote for no more than Two

LISA STRICKLAND
DEMOCRATIC
 TIERRA D WILLIAMS
DEMOCRATIC

PATTI HIGGINS
REPUBLICAN
 JEREMIE THOMPSON
REPUBLICAN

Write-in

JUSTICE OF THE SUPREME COURT
Vote for One

MARIA MCLAUGHLIN
DEMOCRATIC
 KEVIN BROBSON
REPUBLICAN

JUDGE OF THE SUPERIOR COURT
Vote for One

TIMIKA LANE
DEMOCRATIC
 MEGAN SULLIVAN
REPUBLICAN

JUDGE OF THE COMMONWEALTH COURT
Vote for no more than Two

LORI A DUMAS
DEMOCRATIC
 DAVID LEE SPURGEON
DEMOCRATIC
 STACY MARIE WALLACE
REPUBLICAN
 DREW CROMPTON
REPUBLICAN

Write-in

Write-in

PETER BUCK
DEMOCRATIC/REPUBLICAN

CARLINE CREVECOEUR
DEMOCRATIC

DEBORAH ANDERSON
DEMOCRATIC/REPUBLICAN

JACKIE HUFF
DEMOCRATIC

MICHELLE GLENN YOUNG
REPUBLICAN

DAVID K HUTCHINSON
REPUBLICAN

Write-in

Write-in

Write-in

Write-in

JUDGE OF ELECTIONS
Vote for One

Write-in

INSPECTOR OF ELECTIONS
Vote for One

JANE S BROWN
DEMOCRATIC

Write-in

CONSTABLE
Vote for One

COUNCIL NEDD
DEMOCRATIC/REPUBLICAN

Write-in

TURN BALLOT OVER



52 - FERGUSON WEST

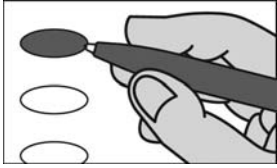
OFFICIAL RETENTION BALLOT
 Commonwealth of Pennsylvania - Centre County
 November 2, 2021

52 - FERGUSON WEST

INSTRUCTIONS TO VOTER

Use a **BLACK** pen.

COMPLETELY blacken the oval to the left of your choice.



An oval blackened to the left of the word **YES** is a vote **IN FAVOR** of the question.

An oval blackened to the left of the word **NO** is a vote **AGAINST** the question.

If you make a mistake. **DO NOT ERASE OR CROSS OUT.** Ask for a new ballot.

**SUPERIOR COURT
 RETENTION ELECTION
 QUESTIONS**

Shall John T Bender be retained for an additional term as Judge of the Superior Court of the Commonwealth of Pennsylvania?

- Yes
- No

Shall Mary Jane Bowes be retained for an additional term as Judge of the Superior Court of the Commonwealth of Pennsylvania?

- Yes
- No

**COMMONWEALTH COURT
 RETENTION ELECTION
 QUESTIONS**

Shall Anne E Covey be retained for an additional term as Judge of the Commonwealth Court of the Commonwealth of Pennsylvania?

- Yes
- No

Shall Renee Cohn Jubelirer be retained for an additional term as Judge of the Commonwealth Court of the Commonwealth of Pennsylvania?

- Yes
- No

**COURT OF COMMON PLEAS
 RETENTION ELECTION
 QUESTION**

Shall Jonathan D Grine be retained for an additional term as Judge of the Court of Common Pleas, 49th Judicial District, Centre County?

- Yes
- No

END OF BALLOT

Steven Dershem

Michael Pipe

Mark Higgins

CENTRE COUNTY BOARD OF ELECTIONS

52 - FERGUSON WEST