

OFFICIAL MUNICIPAL ELECTION BALLOT
 Commonwealth of Pennsylvania - Centre County
 November 2, 2021

53 - GREGG TOWNSHIP

DISTRICT ATTORNEY
Vote for One

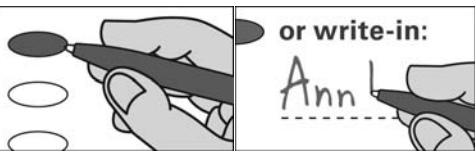
CONSTABLE
Vote for One

INSTRUCTIONS TO VOTER

Use a **BLACK** pen.

COMPLETELY blacken the oval to the left of your choice.

If you make a mistake **DO NOT ERASE OR CROSS OUT**. Ask for a new ballot.



To cast a **WRITE-IN** for a person whose name is not on the ballot, blacken the oval to the left of **WRITE-IN** and clearly print the name in the space provided.

BERNIE CANTORNA
DEMOCRATIC/REPUBLICAN

TIM ROGERS
REPUBLICAN

Write-in

Write-in

JURY COMMISSIONER
Vote for One

SCHOOL DIRECTOR AT LARGE
PENNS VALLEY SCHOOL DISTRICT
Vote for no more than Two

SHELLEY THOMPSON
DEMOCRATIC

ALLEN M MILLER
DEMOCRATIC/REPUBLICAN

HOPE P MILLER
REPUBLICAN

LISA BIERLEIN
DEMOCRATIC/REPUBLICAN

Write-in

Write-in

MAGISTERIAL DISTRICT JUDGE
DISTRICT 49-3-04
Vote for One

Write-in

JUSTICE OF THE SUPREME COURT
Vote for One

GREGORY KOEHLE
DEMOCRATIC/REPUBLICAN

SCHOOL DIRECTOR
REGION 2
PENNS VALLEY SCHOOL DISTRICT
Vote for One

MARIA MCLAUGHLIN
DEMOCRATIC

Write-in

PATRICIA BATTAGLIA
DEMOCRATIC/REPUBLICAN

KEVIN BROBSON
REPUBLICAN

SUPERVISOR
Vote for One

Write-in

Write-in

BEN HAUPT
REPUBLICAN

JUDGE OF ELECTIONS
Vote for One

JUDGE OF THE SUPERIOR COURT
Vote for One

Write-in

TIMIKA LANE
DEMOCRATIC

SUPERVISOR (2-YEAR INTERIM)
Vote for One

Write-in

MEGAN SULLIVAN
REPUBLICAN

INSPECTOR OF ELECTIONS
Vote for One

CATHY J ARNEY
DEMOCRATIC

BEN HAUPT
REPUBLICAN

JUDGE OF THE COMMONWEALTH COURT
Vote for no more than Two

Write-in

Write-in

LORI A DUMAS
DEMOCRATIC

AUDITOR
Vote for One

DAVID LEE SPURGEON
DEMOCRATIC

STACY MARIE WALLACE
REPUBLICAN

THOMAS H CORMAN
REPUBLICAN

DREW CROMPTON
REPUBLICAN

Write-in

TAX COLLECTOR
Vote for One

Write-in

DONNA J MILLER
DEMOCRATIC/REPUBLICAN

TURN BALLOT OVER



Write-in

53 - GREGG TOWNSHIP

OFFICIAL RETENTION BALLOT
Commonwealth of Pennsylvania - Centre County
November 2, 2021

53 - GREGG TOWNSHIP

INSTRUCTIONS TO VOTER

Use a **BLACK** pen.

COMPLETELY blacken the oval to the left of your choice.



An oval blackened to the left of the word **YES** is a vote **IN FAVOR** of the question.

An oval blackened to the left of the word **NO** is a vote **AGAINST** the question.

If you make a mistake. **DO NOT ERASE OR CROSS OUT.** Ask for a new ballot.

**SUPERIOR COURT
RETENTION ELECTION
QUESTIONS**

Shall John T Bender be retained for an additional term as Judge of the Superior Court of the Commonwealth of Pennsylvania?

- Yes
- No

Shall Mary Jane Bowes be retained for an additional term as Judge of the Superior Court of the Commonwealth of Pennsylvania?

- Yes
- No

**COMMONWEALTH COURT
RETENTION ELECTION
QUESTIONS**

Shall Anne E Covey be retained for an additional term as Judge of the Commonwealth Court of the Commonwealth of Pennsylvania?

- Yes
- No

Shall Renee Cohn Jubelirer be retained for an additional term as Judge of the Commonwealth Court of the Commonwealth of Pennsylvania?

- Yes
- No

**COURT OF COMMON PLEAS
RETENTION ELECTION
QUESTION**

Shall Jonathan D Grine be retained for an additional term as Judge of the Court of Common Pleas, 49th Judicial District, Centre County?

- Yes
- No

END OF BALLOT

Steven Dershem
Michael Pipe
Mark Higgins

CENTRE COUNTY BOARD OF ELECTIONS

53 - GREGG TOWNSHIP