

OFFICIAL MUNICIPAL ELECTION BALLOT
 Commonwealth of Pennsylvania - Centre County
 November 2, 2021

89 - FERGUSON WEST CENTRAL

DISTRICT ATTORNEY
Vote for One

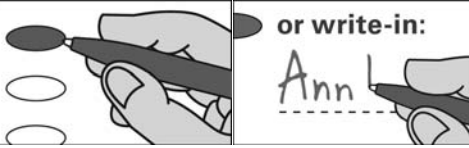
SCHOOL DIRECTOR
STATE COLLEGE SCHOOL DISTRICT
Vote for no more than Four

INSTRUCTIONS TO VOTER

Use a **BLACK** pen.

COMPLETELY blacken the oval to the left of your choice.

If you make a mistake **DO NOT ERASE OR CROSS OUT**. Ask for a new ballot.



To cast a **WRITE-IN** for a person whose name is not on the ballot, blacken the oval to the left of **WRITE-IN** and clearly print the name in the space provided.

BERNIE CANTORNA
DEMOCRATIC/REPUBLICAN

PETER BUCK
DEMOCRATIC/REPUBLICAN

Write-in

CARLINE CREVECOEUR
DEMOCRATIC

DEBORAH ANDERSON
DEMOCRATIC/REPUBLICAN

JURY COMMISSIONER
Vote for One

JACKIE HUFF
DEMOCRATIC

MICHELLE GLENN YOUNG
REPUBLICAN

SHELLEY THOMPSON
DEMOCRATIC

HOPE P MILLER
REPUBLICAN

DAVID K HUTCHINSON
REPUBLICAN

Write-in

Write-in

SUPERVISOR AT LARGE
Vote for no more than Two

Write-in

JUSTICE OF THE SUPREME COURT
Vote for One

LISA STRICKLAND
DEMOCRATIC

TIERRA D WILLIAMS
DEMOCRATIC

Write-in

MARIA MCLAUGHLIN
DEMOCRATIC

PATTI HIGGINS
REPUBLICAN

Write-in

KEVIN BROBSON
REPUBLICAN

JEREMIE THOMPSON
REPUBLICAN

JUDGE OF ELECTIONS
Vote for One

Write-in

Write-in

JUDGE OF THE SUPERIOR COURT
Vote for One

Write-in

Write-in

INSPECTOR OF ELECTIONS
Vote for One

TIMIKA LANE
DEMOCRATIC

MEGAN SULLIVAN
REPUBLICAN

CONSTABLE
Vote for One

COUNCIL NEDD
DEMOCRATIC/REPUBLICAN

Write-in

JUDGE OF THE COMMONWEALTH COURT
Vote for no more than Two

Write-in

LORI A DUMAS
DEMOCRATIC

DAVID LEE SPURGEON
DEMOCRATIC

STACY MARIE WALLACE
REPUBLICAN

DREW CROMPTON
REPUBLICAN

Write-in

Write-in

TURN BALLOT OVER



89 - FERGUSON WEST CENTRAL

OFFICIAL RETENTION BALLOT
Commonwealth of Pennsylvania - Centre County
November 2, 2021

89 - FERGUSON WEST CENTRAL

INSTRUCTIONS TO VOTER

Use a **BLACK** pen.

COMPLETELY blacken the oval to the left of your choice.



An oval blackened to the left of the word **YES** is a vote **IN FAVOR** of the question.

An oval blackened to the left of the word **NO** is a vote **AGAINST** the question.

If you make a mistake. **DO NOT ERASE OR CROSS OUT.** Ask for a new ballot.

**SUPERIOR COURT
RETENTION ELECTION
QUESTIONS**

Shall John T Bender be retained for an additional term as Judge of the Superior Court of the Commonwealth of Pennsylvania?

- Yes
- No

Shall Mary Jane Bowes be retained for an additional term as Judge of the Superior Court of the Commonwealth of Pennsylvania?

- Yes
- No

**COMMONWEALTH COURT
RETENTION ELECTION
QUESTIONS**

Shall Anne E Covey be retained for an additional term as Judge of the Commonwealth Court of the Commonwealth of Pennsylvania?

- Yes
- No

Shall Renee Cohn Jubelirer be retained for an additional term as Judge of the Commonwealth Court of the Commonwealth of Pennsylvania?

- Yes
- No

**COURT OF COMMON PLEAS
RETENTION ELECTION
QUESTION**

Shall Jonathan D Grine be retained for an additional term as Judge of the Court of Common Pleas, 49th Judicial District, Centre County?

- Yes
- No

END OF BALLOT

Steven Dershem
Michael Pipe
Mark Higgins

CENTRE COUNTY BOARD OF ELECTIONS

89 - FERGUSON WEST CENTRAL