

OFFICIAL REPUBLICAN GENERAL PRIMARY BALLOT
 Commonwealth of Pennsylvania - Centre County
 May 17, 2022

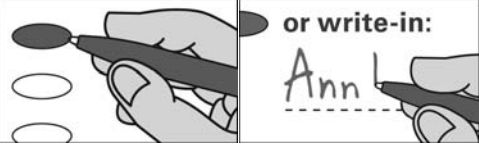
62 - MILES EAST

INSTRUCTIONS TO VOTER

Use a **BLACK** pen.

COMPLETELY blacken the oval to the left of your choice.

If you make a mistake **DO NOT ERASE OR CROSS OUT**. Ask for a new ballot.



To cast a **WRITE-IN** for a person whose name is not on the ballot, blacken the oval to the left of **WRITE-IN** and clearly print the name in the space provided.

GOVERNOR
Vote for One

LIEUTENANT GOVERNOR
Vote for One

LOU BARLETTA
LUZERNE COUNTY

CLARICE SCHILLINGER
MONTGOMERY COUNTY

DOUGLAS V MASTRIANO
FRANKLIN COUNTY

JAMES EARL JONES
MONTGOMERY COUNTY

NCHE ZAMA
NORTHAMPTON COUNTY

RICK SACCONI
ALLEGHENY COUNTY

DAVE WHITE
DELAWARE COUNTY

JOHN BROWN
NORTHAMPTON COUNTY

MELISSA HART
ALLEGHENY COUNTY

CHRIS FRYE
LAWRENCE COUNTY

UNITED STATES SENATOR
Vote for One

BILL MCSWAIN
CHESTER COUNTY

JEFF COLEMAN
CUMBERLAND COUNTY

KATHY BARNETTE
MONTGOMERY COUNTY

CHARLIE GEROW
CUMBERLAND COUNTY

RUSS DIAMOND
LEBANON COUNTY

MEHMET OZ
MONTGOMERY COUNTY

JOE GALE
MONTGOMERY COUNTY

CARRIE LEWIS DELROSSO
ALLEGHENY COUNTY

GEORGE BOCHETTO
PHILADELPHIA COUNTY

JAKE CORMAN
CENTRE COUNTY

TEDDY DANIELS
WAYNE COUNTY

JEFF BARTOS
MONTGOMERY COUNTY

Write-in

Write-in

DAVE MCCORMICK
ALLEGHENY COUNTY

REPRESENTATIVE IN CONGRESS
15th CONGRESSIONAL
Vote for One

SEAN GALE
MONTGOMERY COUNTY

GLENN GT THOMPSON
CENTRE COUNTY

CARLA SANDS
CUMBERLAND COUNTY

Write-in

REPRESENTATIVE IN THE GENERAL ASSEMBLY
171st LEGISLATIVE
Vote for One

Write-in

KERRY A BENNINGHOFF
CENTRE COUNTY

Write-in

CONTINUE VOTING
TURN BALLOT OVER



**MEMBER OF REPUBLICAN
STATE COMMITTEE**

Vote for no more than Three
1 male, 1 female and 1 either gender

KRISTINE ENG
FERGUSON TWP - FEMALE

LUCA MIRALDI
FERGUSON TWP - MALE

JACOB WERNER
STATE COLLEGE BORO - MALE

PHYLLIS AUSTIN
BELLEFONTE BORO - FEMALE

RICHARD E SMEAD
BELLEFONTE BORO - MALE

KATHY EVEY
BENNER TWP - FEMALE

JOYCE C HAAS
PATTON TWP - FEMALE

MARK PARFITT
PATTON TWP - MALE

Write-in

Write-in

Write-in

**COUNTY REPUBLICAN
COMMITTEE CHAIR**
Vote for One

MICHELLE
SCHELLBERG

Write-in

**COUNTY REPUBLICAN
COMMITTEE VICE-CHAIR**
Vote for One

JENNIFER E
DELLANTONIO

Write-in

END OF BALLOT

SAMPLE

Hevon Dershem
Michael Pipe
Mark Higgins