


OFFICIAL MUNICIPAL ELECTION BALLOT
Commonwealth of Pennsylvania - Centre County
November 7, 2023

6 CENTRE HALL BOROUGH	COUNTY COMMISSIONER	COUNCILMAN
INSTRUCTIONS TO VOTER	Vote for no more than Two	Vote for no more than Four
Use a BLACK pen.	<input type="radio"/> MARK HIGGINS DEMOCRATIC	<input type="radio"/> CHRISTINE COOPER DEMOCRATIC
COMPLETELY blacken the oval to the left of your choice.	<input type="radio"/> AMBER CISTARO CONCEPCION DEMOCRATIC	<input type="radio"/> MATT POWELL DEMOCRATIC
If you make a mistake DO NOT ERASE OR CROSS OUT . Ask for a new ballot.	<input type="radio"/> STEVEN DERSHEM REPUBLICAN	<input type="radio"/> PATRICK K KELLY DEMOCRATIC
	<input type="radio"/> MARIE LIBRIZZI REPUBLICAN	<input type="radio"/> LUANN YEARICK REPUBLICAN
 or write-in:	<input type="radio"/> Write-in	<input type="radio"/> DAVIS V ARAUJO REPUBLICAN
	<input type="radio"/> Write-in	<input type="radio"/> Write-in
	CONTROLLER	<input type="radio"/> Write-in
	Vote for One	<input type="radio"/> Write-in
To cast a WRITE-IN for a person whose name is not on the ballot, blacken the oval to the left of WRITE-IN and clearly print the name in the space provided.	<input type="radio"/> JASON MOSER DEMOCRATIC	<input type="radio"/> Write-in
	<input type="radio"/> TREVOR STAUFFER REPUBLICAN	COUNCILMAN (2-YEAR INTERIM)
	<input type="radio"/> Write-in	Vote for One
JUSTICE OF THE SUPREME COURT	SHERIFF	<input type="radio"/> Write-in
Vote for One	Vote for One	AUDITOR
<input type="radio"/> DANIEL MCCAFFERY DEMOCRATIC	<input type="radio"/> BRYAN SAMPSEL REPUBLICAN	Vote for One
<input type="radio"/> CAROLYN CARLUCCIO REPUBLICAN	<input type="radio"/> Write-in	<input type="radio"/> Write-in
<input type="radio"/> Write-in	TREASURER	CONSTABLE (4-YEAR INTERIM)
	Vote for One	Vote for One
JUDGE OF THE SUPERIOR COURT	<input type="radio"/> COLLEEN KENNEDY DEMOCRATIC	<input type="radio"/> Write-in
Vote for no more than Two	<input type="radio"/> JUSTIN BEHRENS REPUBLICAN	SCHOOL DIRECTOR AT LARGE PENNS VALLEY SCHOOL DISTRICT
<input type="radio"/> JILL BECK DEMOCRATIC	<input type="radio"/> Write-in	Vote for no more than Four
<input type="radio"/> TIMIKA LANE DEMOCRATIC	PROTHONOTARY	<input type="radio"/> CELESTA POWELL DEMOCRATIC
<input type="radio"/> MARIA BATTISTA REPUBLICAN	Vote for One	<input type="radio"/> DOMER O SMELTZER DEMOCRATIC
<input type="radio"/> HARRY F SMAIL JR REPUBLICAN	<input type="radio"/> JEREMY S BREON DEMOCRATIC	<input type="radio"/> NICKELAUS ENGLE DEMOCRATIC
<input type="radio"/> Write-in	<input type="radio"/> Write-in	<input type="radio"/> SCOTT E BUTLER DEMOCRATIC
<input type="radio"/> Write-in	RECORDER OF DEEDS	<input type="radio"/> DAN HALL REPUBLICAN
	Vote for One	<input type="radio"/> MOLLY MILLER REPUBLICAN
JUDGE OF THE COMMONWEALTH COURT	<input type="radio"/> ROBERT ZEIGLER DEMOCRATIC	<input type="radio"/> KIM KELLERMAN-DOMIN REPUBLICAN
Vote for One	<input type="radio"/> JOSEPH L DAVIDSON REPUBLICAN	<input type="radio"/> MICHAEL F PASE REPUBLICAN
<input type="radio"/> MATT WOLF DEMOCRATIC	<input type="radio"/> Write-in	<input type="radio"/> Write-in
<input type="radio"/> MEGAN MARTIN REPUBLICAN	REGISTER OF WILLS	<input type="radio"/> Write-in
<input type="radio"/> Write-in	Vote for One	<input type="radio"/> Write-in
	<input type="radio"/> CHRISTINE MILLINDER REPUBLICAN	<input type="radio"/> Write-in
	<input type="radio"/> Write-in	
JUDGE OF THE COURT OF COMMON PLEAS 49th JUDICIAL DISTRICT	CORONER	
Vote for One	Vote for One	
<input type="radio"/> JULIA RATER DEMOCRATIC/REPUBLICAN	<input type="radio"/> SCOTT A SAYERS DEMOCRATIC/REPUBLICAN	
<input type="radio"/> Write-in	<input type="radio"/> Write-in	
	<input type="radio"/> Write-in	
	<input type="radio"/> Write-in	
	<input type="radio"/> Write-in	
	<input type="radio"/> Write-in	
	<input type="radio"/> Write-in	TURN BALLOT OVER
	<input type="radio"/> Write-in	→ → → → →

**SCHOOL DIRECTOR
PENNS VALLEY SCHOOL DISTRICT
REGION 1**

Vote for One

DANIEL S PICK
DEMOCRATIC/REPUBLICAN

Write-in

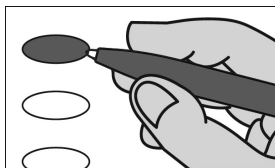
OFFICIAL RETENTION BALLOT

Commonwealth of Pennsylvania
Centre County
November 7, 2023

INSTRUCTIONS TO VOTER

Use a **BLACK** pen.

COMPLETELY blacken the oval to the left of your choice.



An oval blackened to the left of the word **YES** is a vote **IN FAVOR** of the question.

An oval blackened to the left of the word **NO** is a vote **AGAINST** the question.

If you make a mistake, **DO NOT ERASE OR CROSS OUT**. Ask for a new ballot.

**SUPERIOR COURT
RETENTION ELECTION
QUESTIONS**


SHALL JACK PANELLA BE
RETAINED FOR AN ADDITIONAL
TERM AS JUDGE OF THE
SUPERIOR COURT OF THE
COMMONWEALTH OF
PENNSYLVANIA?

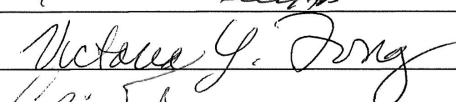
- Yes
- No


SHALL VICTOR P STABILE BE
RETAINED FOR AN ADDITIONAL
TERM AS JUDGE OF THE
SUPERIOR COURT OF THE
COMMONWEALTH OF
PENNSYLVANIA?

- Yes
- No

**END OF BALLOT
THANK YOU FOR VOTING**







CENTRE COUNTY BOARD OF ELECTION