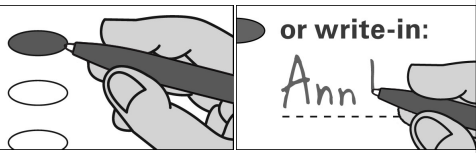
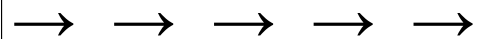


OFFICIAL MUNICIPAL ELECTION BALLOT
Commonwealth of Pennsylvania - Centre County
November 7, 2023

15 RUSH NORTH CENTRAL	COUNTY COMMISSIONER	DISTRICT JUDGE MAGISTERIAL DISTRICT 49-3-03
INSTRUCTIONS TO VOTER	Vote for no more than Two	Vote for One
Use a BLACK pen.	<input type="radio"/> MARK HIGGINS DEMOCRATIC	<input type="radio"/> ALLEN W SINCLAIR DEMOCRATIC/REPUBLICAN
COMPLETELY blacken the oval to the left of your choice.	<input type="radio"/> AMBER CISTARO CONCEPCION DEMOCRATIC	<input type="radio"/> Write-in
If you make a mistake DO NOT ERASE OR CROSS OUT . Ask for a new ballot.	<input type="radio"/> STEVEN DERSHEM REPUBLICAN	SUPERVISOR
	<input type="radio"/> MARIE LIBRIZZI REPUBLICAN	Vote for One
	<input type="radio"/> Write-in	<input type="radio"/> DAVID JACKSON DEMOCRATIC
	<input type="radio"/> Write-in	<input type="radio"/> DAVID GREENWALD REPUBLICAN
To cast a WRITE-IN for a person whose name is not on the ballot, blacken the oval to the left of WRITE-IN and clearly print the name in the space provided.	CONTROLLER	<input type="radio"/> Write-in
	Vote for One	AUDITOR
	<input type="radio"/> JASON MOSER DEMOCRATIC	Vote for One
	<input type="radio"/> TREVOR STAUFFER REPUBLICAN	<input type="radio"/> Write-in
JUSTICE OF THE SUPREME COURT	<input type="radio"/> Write-in	AUDITOR (4-YEAR INTERIM)
Vote for One	SHERIFF	Vote for One
<input type="radio"/> DANIEL MCCAFFERY DEMOCRATIC	Vote for One	<input type="radio"/> Write-in
<input type="radio"/> CAROLYN CARLUCCIO REPUBLICAN	<input type="radio"/> BRYAN SAMPSEL REPUBLICAN	AUDITOR (2-YEAR INTERIM)
<input type="radio"/> Write-in	<input type="radio"/> Write-in	Vote for One
JUDGE OF THE SUPERIOR COURT	TREASURER	<input type="radio"/> Write-in
Vote for no more than Two	Vote for One	SCHOOL DIRECTOR PHILIPSBURG OSCEOLA SCHOOL DISTRICT DISTRICT 2
<input type="radio"/> JILL BECK DEMOCRATIC	<input type="radio"/> COLLEEN KENNEDY DEMOCRATIC	Vote for One
<input type="radio"/> TIMIKA LANE DEMOCRATIC	<input type="radio"/> JUSTIN BEHRENS REPUBLICAN	<input type="radio"/> TODD L JEFFRIES DEMOCRATIC/REPUBLICAN
<input type="radio"/> MARIA BATTISTA REPUBLICAN	<input type="radio"/> Write-in	<input type="radio"/> Write-in
<input type="radio"/> HARRY F SMAIL JR REPUBLICAN	PROTHONOTARY	
<input type="radio"/> Write-in	Vote for One	
<input type="radio"/> Write-in	<input type="radio"/> JEREMY S BREON DEMOCRATIC	
JUDGE OF THE COMMONWEALTH COURT	<input type="radio"/> Write-in	
Vote for One	RECORDER OF DEEDS	
<input type="radio"/> MATT WOLF DEMOCRATIC	Vote for One	
<input type="radio"/> MEGAN MARTIN REPUBLICAN	<input type="radio"/> ROBERT ZEIGLER DEMOCRATIC	
<input type="radio"/> Write-in	<input type="radio"/> JOSEPH L DAVIDSON REPUBLICAN	
JUDGE OF THE COURT OF COMMON PLEAS 49th JUDICIAL DISTRICT	<input type="radio"/> Write-in	
Vote for One	REGISTER OF WILLS	
<input type="radio"/> JULIA RATER DEMOCRATIC/REPUBLICAN	Vote for One	
<input type="radio"/> Write-in	<input type="radio"/> CHRISTINE MILLINDER REPUBLICAN	
	<input type="radio"/> Write-in	
	CORONER	
	Vote for One	
	<input type="radio"/> SCOTT A SAYERS DEMOCRATIC/REPUBLICAN	
	<input type="radio"/> Write-in	

TURN BALLOT OVER



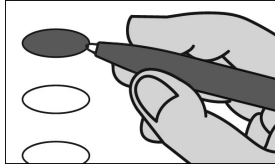
OFFICIAL RETENTION BALLOT

Commonwealth of Pennsylvania
Centre County
November 7, 2023

INSTRUCTIONS TO VOTER

Use a **BLACK** pen.

COMPLETELY blacken the oval to the left of your choice.



An oval blackened to the left of the word **YES** is a vote **IN FAVOR** of the question.

An oval blackened to the left of the word **NO** is a vote **AGAINST** the question.

If you make a mistake, **DO NOT ERASE OR CROSS OUT**. Ask for a new ballot.

**SUPERIOR COURT
RETENTION ELECTION
QUESTIONS**

SHALL JACK PANELLA BE
RETAINED FOR AN ADDITIONAL
TERM AS JUDGE OF THE
SUPERIOR COURT OF THE
COMMONWEALTH OF
PENNSYLVANIA?

- Yes
- No

SHALL VICTOR P STABILE BE
RETAINED FOR AN ADDITIONAL
TERM AS JUDGE OF THE
SUPERIOR COURT OF THE
COMMONWEALTH OF
PENNSYLVANIA?

- Yes
- No

END OF BALLOT

THANK YOU FOR VOTING

[Signature]

Victoria J. Long

[Signature]

CENTRE COUNTY BOARD OF ELECTION