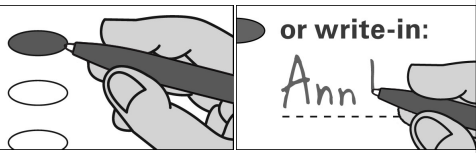


**OFFICIAL MUNICIPAL ELECTION BALLOT**  
Commonwealth of Pennsylvania - Centre County  
November 7, 2023

<b>38 BOGGS EAST</b>	<b>COUNTY COMMISSIONER</b>	<b>SUPERVISOR</b>
<b>INSTRUCTIONS TO VOTER</b>	Vote for no more than Two	Vote for One
Use a <b>BLACK</b> pen.	<input type="radio"/> MARK HIGGINS DEMOCRATIC	<input type="radio"/> SCOTT P BENNETT REPUBLICAN
<b>COMPLETELY</b> blacken the oval to the left of your choice.	<input type="radio"/> AMBER CISTARO CONCEPCION DEMOCRATIC	<input type="radio"/> Write-in
If you make a mistake <b>DO NOT ERASE OR CROSS OUT</b> . Ask for a new ballot.	<input type="radio"/> STEVEN DERSHEM REPUBLICAN	<b>AUDITOR</b>
	<input type="radio"/> MARIE LIBRIZZI REPUBLICAN	Vote for One
	<input type="radio"/> Write-in	<input type="radio"/> Write-in
	<input type="radio"/> Write-in	<b>AUDITOR (4-YEAR INTERIM)</b>
	<b>CONTROLLER</b>	Vote for One
To cast a <b>WRITE-IN</b> for a person whose name is not on the ballot, blacken the oval to the left of <b>WRITE-IN</b> and clearly print the name in the space provided.	Vote for One	<input type="radio"/> Write-in
	<input type="radio"/> JASON MOSER DEMOCRATIC	<b>AUDITOR (2-YEAR INTERIM)</b>
	<input type="radio"/> TREVOR STAUFFER REPUBLICAN	Vote for One
<b>JUSTICE OF THE SUPREME COURT</b>	<input type="radio"/> Write-in	<input type="radio"/> Write-in
Vote for One	<b>SHERIFF</b>	<b>CONSTABLE (4-YEAR INTERIM)</b>
<input type="radio"/> DANIEL MCCAFFERY DEMOCRATIC	Vote for One	Vote for One
<input type="radio"/> CAROLYN CARLUCCIO REPUBLICAN	<input type="radio"/> BRYAN SAMPSEL REPUBLICAN	<input type="radio"/> Write-in
<input type="radio"/> Write-in	<input type="radio"/> Write-in	<b>SCHOOL DIRECTOR BALD EAGLE SCHOOL DISTRICT REGION 3</b>
<b>JUDGE OF THE SUPERIOR COURT</b>	<b>TREASURER</b>	Vote for no more than Two
Vote for no more than Two	Vote for One	
<input type="radio"/> JILL BECK DEMOCRATIC	<input type="radio"/> COLLEEN KENNEDY DEMOCRATIC	<input type="radio"/> JASON ALLEN PENLAND DEMOCRATIC/REPUBLICAN
<input type="radio"/> TIMIKA LANE DEMOCRATIC	<input type="radio"/> JUSTIN BEHRENS REPUBLICAN	<input type="radio"/> BRANDI BARTLEY DEMOCRATIC/REPUBLICAN
<input type="radio"/> MARIA BATTISTA REPUBLICAN	<input type="radio"/> Write-in	<input type="radio"/> Write-in
<input type="radio"/> HARRY F SMAIL JR REPUBLICAN	<b>PROTHONOTARY</b>	<input type="radio"/> Write-in
<input type="radio"/> Write-in	Vote for One	
<input type="radio"/> Write-in	<input type="radio"/> JEREMY S BREON DEMOCRATIC	
<b>JUDGE OF THE COMMONWEALTH COURT</b>	<input type="radio"/> Write-in	
Vote for One	<b>RECORDER OF DEEDS</b>	
<input type="radio"/> MATT WOLF DEMOCRATIC	Vote for One	
<input type="radio"/> MEGAN MARTIN REPUBLICAN	<input type="radio"/> ROBERT ZEIGLER DEMOCRATIC	
<input type="radio"/> Write-in	<input type="radio"/> JOSEPH L DAVIDSON REPUBLICAN	
<b>JUDGE OF THE COURT OF COMMON PLEAS 49th JUDICIAL DISTRICT</b>	<input type="radio"/> Write-in	
Vote for One	<b>REGISTER OF WILLS</b>	
<input type="radio"/> JULIA RATER DEMOCRATIC/REPUBLICAN	Vote for One	
<input type="radio"/> Write-in	<input type="radio"/> CHRISTINE MILLINDER REPUBLICAN	
	<input type="radio"/> Write-in	
	<b>CORONER</b>	
	Vote for One	
	<input type="radio"/> SCOTT A SAYERS DEMOCRATIC/REPUBLICAN	<b>TURN BALLOT OVER</b>
	<input type="radio"/> Write-in	→ → → → →

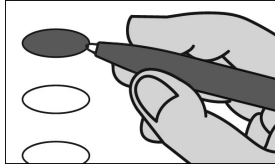
**OFFICIAL RETENTION BALLOT**

Commonwealth of Pennsylvania  
Centre County  
November 7, 2023

**INSTRUCTIONS TO VOTER**

Use a **BLACK** pen.

**COMPLETELY** blacken the oval to the left of your choice.



An oval blackened to the left of the word **YES** is a vote **IN FAVOR** of the question.

An oval blackened to the left of the word **NO** is a vote **AGAINST** the question.

If you make a mistake, **DO NOT ERASE OR CROSS OUT**. Ask for a new ballot.

**SUPERIOR COURT  
RETENTION ELECTION  
QUESTIONS**

SHALL JACK PANELLA BE  
RETAINED FOR AN ADDITIONAL  
TERM AS JUDGE OF THE  
SUPERIOR COURT OF THE  
COMMONWEALTH OF  
PENNSYLVANIA?

- Yes
- No

SHALL VICTOR P STABILE BE  
RETAINED FOR AN ADDITIONAL  
TERM AS JUDGE OF THE  
SUPERIOR COURT OF THE  
COMMONWEALTH OF  
PENNSYLVANIA?

- Yes
- No

**END OF BALLOT**

**THANK YOU FOR VOTING**

*[Signature]*  
\_\_\_\_\_  
*Victoria J. Long*  
\_\_\_\_\_  
*[Signature]*  
\_\_\_\_\_

CENTRE COUNTY BOARD OF ELECTION