


OFFICIAL MUNICIPAL ELECTION BALLOT
Commonwealth of Pennsylvania - Centre County
November 7, 2023

<p align="center">68 PATTON SOUTH 3</p>	<p align="center">COUNTY COMMISSIONER</p> <p align="center">Vote for no more than Two</p>	<p align="center">DISTRICT JUDGE MAGISTERIAL DISTRICT 49-2-01</p> <p align="center">Vote for One</p>
<p align="center">INSTRUCTIONS TO VOTER</p> <p>Use a BLACK pen.</p> <p>COMPLETELY blacken the oval to the left of your choice.</p> <p>If you make a mistake DO NOT ERASE OR CROSS OUT. Ask for a new ballot.</p>	<p><input type="radio"/> MARK HIGGINS DEMOCRATIC</p> <p><input type="radio"/> AMBER CISTARO CONCEPCION DEMOCRATIC</p> <p><input type="radio"/> STEVEN DERSHEM REPUBLICAN</p> <p><input type="radio"/> MARIE LIBRIZZI REPUBLICAN</p> <p><input type="radio"/> Write-in</p>	<p><input type="radio"/> CASEY MCCLAIN DEMOCRATIC/REPUBLICAN</p> <p><input type="radio"/> Write-in</p>
 <p>or write-in:</p>	<p><input type="radio"/> Write-in</p> <p><input type="radio"/> Write-in</p>	<p align="center">SUPERVISOR</p> <p align="center">Vote for no more than Two</p> <p><input type="radio"/> BETSY WHITMAN DEMOCRATIC</p> <p><input type="radio"/> SUSAN M CHYCZEWSKI DEMOCRATIC</p>
<p>To cast a WRITE-IN for a person whose name is not on the ballot, blacken the oval to the left of WRITE-IN and clearly print the name in the space provided.</p>	<p align="center">CONTROLLER</p> <p align="center">Vote for One</p> <p><input type="radio"/> JASON MOSER DEMOCRATIC</p> <p><input type="radio"/> TREVOR STAUFFER REPUBLICAN</p> <p><input type="radio"/> Write-in</p>	<p><input type="radio"/> Write-in</p> <p><input type="radio"/> Write-in</p> <p align="center">AUDITOR</p> <p align="center">Vote for One</p>
<p align="center">JUSTICE OF THE SUPREME COURT</p> <p align="center">Vote for One</p>	<p><input type="radio"/> Write-in</p> <p align="center">SHERIFF</p> <p align="center">Vote for One</p>	<p><input type="radio"/> Write-in</p> <p align="center">AUDITOR (4-YEAR INTERIM)</p> <p align="center">Vote for One</p>
<p><input type="radio"/> DANIEL MCCAFFERY DEMOCRATIC</p>	<p><input type="radio"/> BRYAN SAMPSEL REPUBLICAN</p>	<p><input type="radio"/> Write-in</p>
<p><input type="radio"/> CAROLYN CARLUCCIO REPUBLICAN</p>	<p><input type="radio"/> Write-in</p>	<p align="center">AUDITOR (2-YEAR INTERIM)</p> <p align="center">Vote for One</p>
<p><input type="radio"/> Write-in</p>	<p><input type="radio"/> Write-in</p>	<p><input type="radio"/> Write-in</p>
<p align="center">JUDGE OF THE SUPERIOR COURT</p> <p align="center">Vote for no more than Two</p>	<p align="center">TREASURER</p> <p align="center">Vote for One</p>	<p align="center">TAX COLLECTOR (2-YEAR INTERIM)</p> <p align="center">Vote for One</p>
<p><input type="radio"/> JILL BECK DEMOCRATIC</p>	<p><input type="radio"/> COLLEEN KENNEDY DEMOCRATIC</p>	<p><input type="radio"/> Write-in</p>
<p><input type="radio"/> TIMIKA LANE DEMOCRATIC</p>	<p><input type="radio"/> JUSTIN BEHRENS REPUBLICAN</p>	<p align="center">Vote for One</p>
<p><input type="radio"/> MARIA BATTISTA REPUBLICAN</p>	<p><input type="radio"/> Write-in</p>	<p><input type="radio"/> Write-in</p>
<p><input type="radio"/> HARRY F SMAIL JR REPUBLICAN</p>	<p align="center">PROTHONOTARY</p> <p align="center">Vote for One</p>	<p align="center">CONSTABLE (4-YEAR INTERIM)</p> <p align="center">Vote for One</p>
<p><input type="radio"/> Write-in</p>	<p><input type="radio"/> JEREMY S BREON DEMOCRATIC</p>	<p><input type="radio"/> Write-in</p>
<p><input type="radio"/> Write-in</p>	<p><input type="radio"/> Write-in</p>	<p><input type="radio"/> Write-in</p>
<p align="center">JUDGE OF THE COMMONWEALTH COURT</p> <p align="center">Vote for One</p>	<p align="center">RECORDER OF DEEDS</p> <p align="center">Vote for One</p>	<p><input type="radio"/> Write-in</p>
<p><input type="radio"/> MATT WOLF DEMOCRATIC</p>	<p><input type="radio"/> ROBERT ZEIGLER DEMOCRATIC</p>	<p><input type="radio"/> Write-in</p>
<p><input type="radio"/> MEGAN MARTIN REPUBLICAN</p>	<p><input type="radio"/> JOSEPH L DAVIDSON REPUBLICAN</p>	<p><input type="radio"/> Write-in</p>
<p><input type="radio"/> Write-in</p>	<p><input type="radio"/> Write-in</p>	<p><input type="radio"/> Write-in</p>
<p align="center">JUDGE OF THE COURT OF COMMON PLEAS 49th JUDICIAL DISTRICT</p> <p align="center">Vote for One</p>	<p align="center">REGISTER OF WILLS</p> <p align="center">Vote for One</p>	<p><input type="radio"/> Write-in</p>
<p><input type="radio"/> JULIA RATER DEMOCRATIC/REPUBLICAN</p>	<p><input type="radio"/> CHRISTINE MILLINDER REPUBLICAN</p>	<p><input type="radio"/> Write-in</p>
<p><input type="radio"/> Write-in</p>	<p><input type="radio"/> Write-in</p>	<p><input type="radio"/> Write-in</p>
<p><input type="radio"/> Write-in</p>	<p align="center">CORONER</p> <p align="center">Vote for One</p>	<p><input type="radio"/> Write-in</p>
<p><input type="radio"/> Write-in</p>	<p><input type="radio"/> SCOTT A SAYERS DEMOCRATIC/REPUBLICAN</p>	<p><input type="radio"/> Write-in</p>
<p><input type="radio"/> Write-in</p>	<p><input type="radio"/> Write-in</p>	<p align="center">TURN BALLOT OVER</p> <p align="center">→ → → → →</p>
<p><input type="radio"/> Write-in</p>	<p><input type="radio"/> Write-in</p>	<p><input type="radio"/> Write-in</p>

**SCHOOL DIRECTOR
STATE COLLEGE SCHOOL DISTRICT**

Vote for no more than Five

- AMY BADER
DEMOCRATIC
- GRETCHEN BRANDT
DEMOCRATIC
- ANNE DEMO
DEMOCRATIC
- DANIEL KOLBE
DEMOCRATIC
- AARON MILLER
DEMOCRATIC
- MICHELLE YOUNG
REPUBLICAN
- BARRY J FENCHAK
REPUBLICAN

- NATHAN BISH
REPUBLICAN
- JOHN KRAJCOVIC
REPUBLICAN
- MEGAN LAYNG
REPUBLICAN

Write-in

Write-in

Write-in

Write-in

Write-in

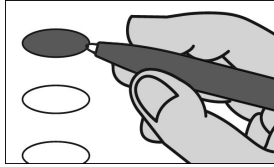
OFFICIAL RETENTION BALLOT

Commonwealth of Pennsylvania
Centre County
November 7, 2023

INSTRUCTIONS TO VOTER

Use a **BLACK** pen.

COMPLETELY blacken the oval to the left of your choice.



An oval blackened to the left of the word **YES** is a vote **IN FAVOR** of the question.

An oval blackened to the left of the word **NO** is a vote **AGAINST** the question.

If you make a mistake, **DO NOT ERASE OR CROSS OUT**. Ask for a new ballot.

**SUPERIOR COURT
RETENTION ELECTION
QUESTIONS**

SHALL JACK PANELLA BE
RETAINED FOR AN ADDITIONAL
TERM AS JUDGE OF THE
SUPERIOR COURT OF THE
COMMONWEALTH OF
PENNSYLVANIA?

- Yes
- No

SHALL VICTOR P STABILE BE
RETAINED FOR AN ADDITIONAL
TERM AS JUDGE OF THE
SUPERIOR COURT OF THE
COMMONWEALTH OF
PENNSYLVANIA?

- Yes
- No

END OF BALLOT

THANK YOU FOR VOTING

[Signature]

Michelle Young

[Signature]

CENTRE COUNTY BOARD OF ELECTION